

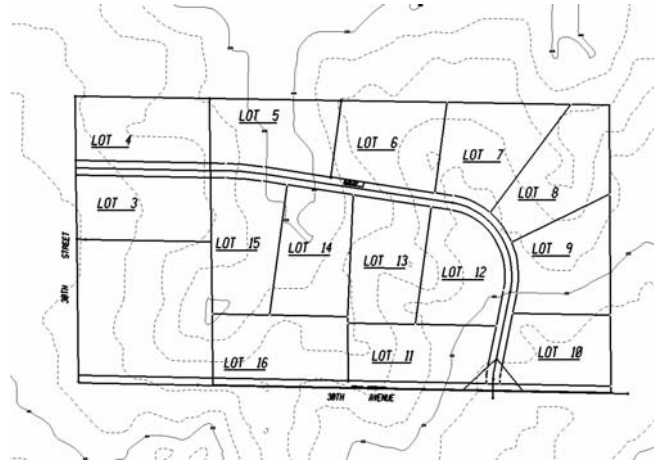
Elk Ridge Residential Development (2006)

Client:

Kim Gillette, Edina Realty

Project Number:

N/A



Location:

Approximately five miles northwest of Eau Claire, Wisconsin in the Town of Wheaton.

Client Contact:

Kim Gillette
Edina Realty
2142 Brackett Ave. Suite 3
Eau Claire, WI 54701
715-858-1544

Staff Assignments:

Matt Gundry, P.E. – Project engineer
Tony Zimmer – Plan preparation

Project Scope:

This 80-acre residential development located in rolling farmlands required approximately one half mile of new roadway designed to township standards. Coordination with the Town of Wheaton, future owner of the roadway, was ongoing throughout the project. The termini of the project are intersections with two existing township roads. This new roadway provides access to twelve of the 5-acre lots.

Environmental coordination was provided with the Wisconsin Department of Natural Resources as well as the Chippewa County Land Conservation Department. In addition to the erosion control plan normally provided with a roadway design, a comprehensive stormwater manual documented the adherence of the project to the requirements in NR151. Special attention was paid to reduction in sediment discharge while maintaining acceptable storm flows and infiltration rates. Sediment reduction was accomplished with four sedimentation basins designed to capture diverted ditch flow.

This project was constructed in the summer of 2006.